



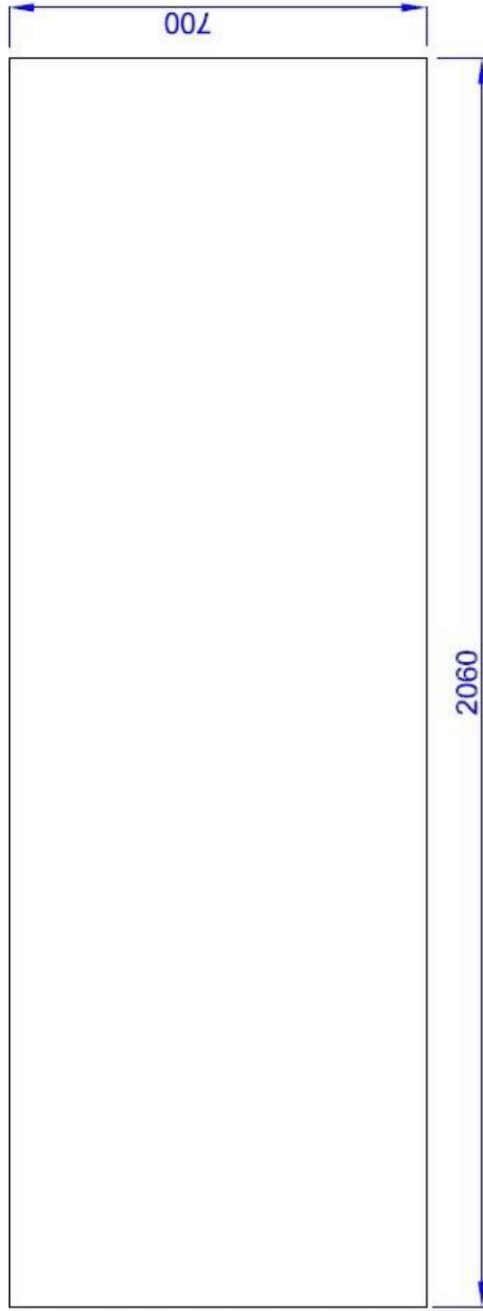
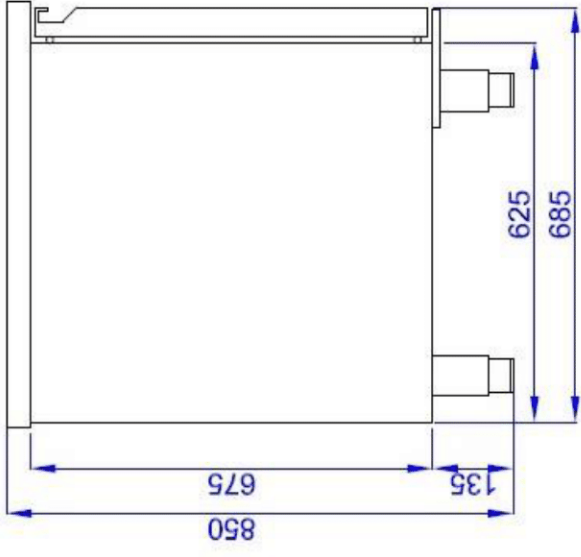
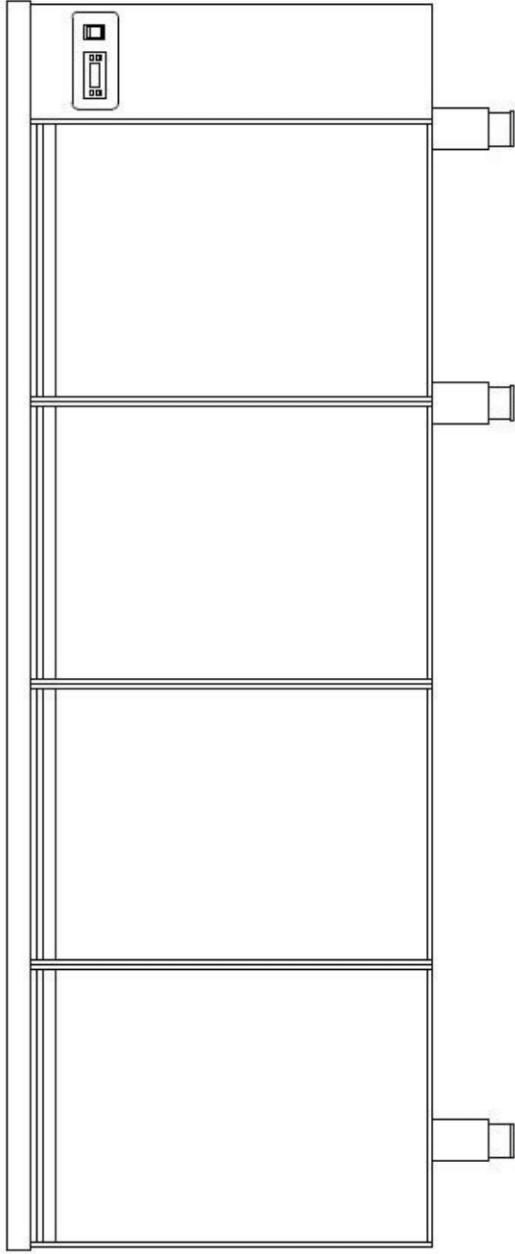
7489.5095

MATERIAL AND TECHNICAL CHARACTERISTICS MANUEL

INDEX :

1. CHARACTERISTICS
2. INSIDE , OUTSIDE DIMENSIONS
3. EXPLODED WIEV
4. SPARE PART LIST
5. GAS AND ELECTRICAL SCHEMA





OUTSIDE DIMENSIONS = 2060x700x850
IN SIDE DIMENSIONS = 1760x562x605

CHARACTERISTIC SPECIALITIES

Climate Class	:T
Safety Class	:1
Working Temperature C	:-2C / +8C
Thermostate Set Temperature	:-1C
Environment Temperature	: +32C
Environment Moisture Propertion	: %65
Energy Consumption	:0,01 KW
	:0,25 KW
Cooling Group Capacity	:2-450 W
Voltage- Freqans	:240V / 50 Hz

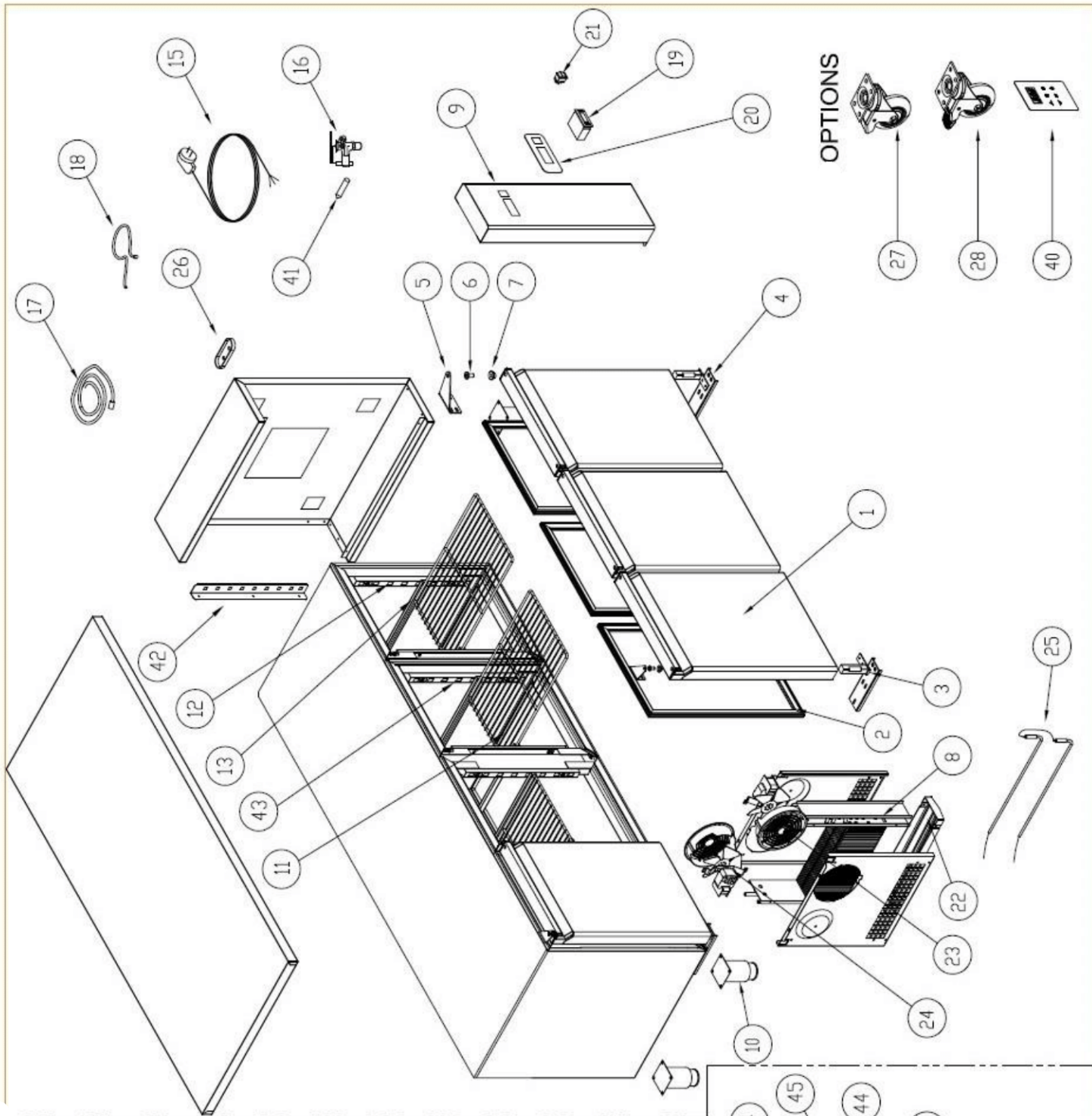
ACCESORIES AND CONTROL SWITCHES

Digital Thermometer	: Digital Thermometer	
Energy Lamp	: Ad / PCC1	
Power Switch	: Ad / PCS1	
Hinges Group	: Ad / PCS4	
Stand	: Ad / PCS 5	+ stainlies Steel Stand
Shelf	:	4 Unts Plastic Coated Shelf

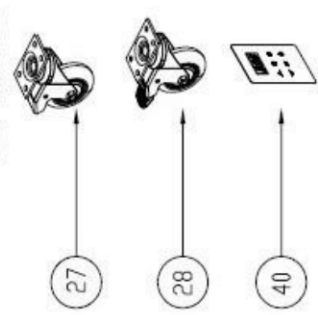
TECHNICAL CHARACTERISTICS

Outside Dimensions	:2060X700X850mm
Inside Dimensions	1295x562x605mm
Package Dimensions	:2160X800X1000mm
Inside Volume	: 632 lt
Gross Weight	: 170 kg
Net Weigt	: 145 kg
Outside Body	: 0,60 mm I NOX 304 SB+PVC
Inside Body	: 0,50 mm I NOX 304 MAT+PVC
Insulation Metarial Thicnes	: 50 mm
Insulation Metarial Volum	: 42 Kg / m3 +/-1
Compresor	: EMT 6170 Z (1/4hp) (EKSTRA--OPTION)
Condanser	: 1/2 Hp (EKSTRA--OPTION)
Condanser Fan	:10/38W-0,23A-1300/1550Rpm-230V(EKSTRA-OPTION)
Evaporatör	: NTV tip evap / NTV type evap(0,20kw) x 2 Adet
Evaporatör Fan	: Coprel W5/2A--13/26W--230V-50/60Hz x 4 Adet
Dryer	: 30 gr 15002SGDR02
refrigerator Gas	: R404A
Ref. Gas Quantity	: 380 gr
Certifications	: TS 2225 EN 60335-2-4'
Serial No	:
	Packed And Easy Read
Packing	:
	Wooden Palet Is Down And Covered
Qualty Time	:

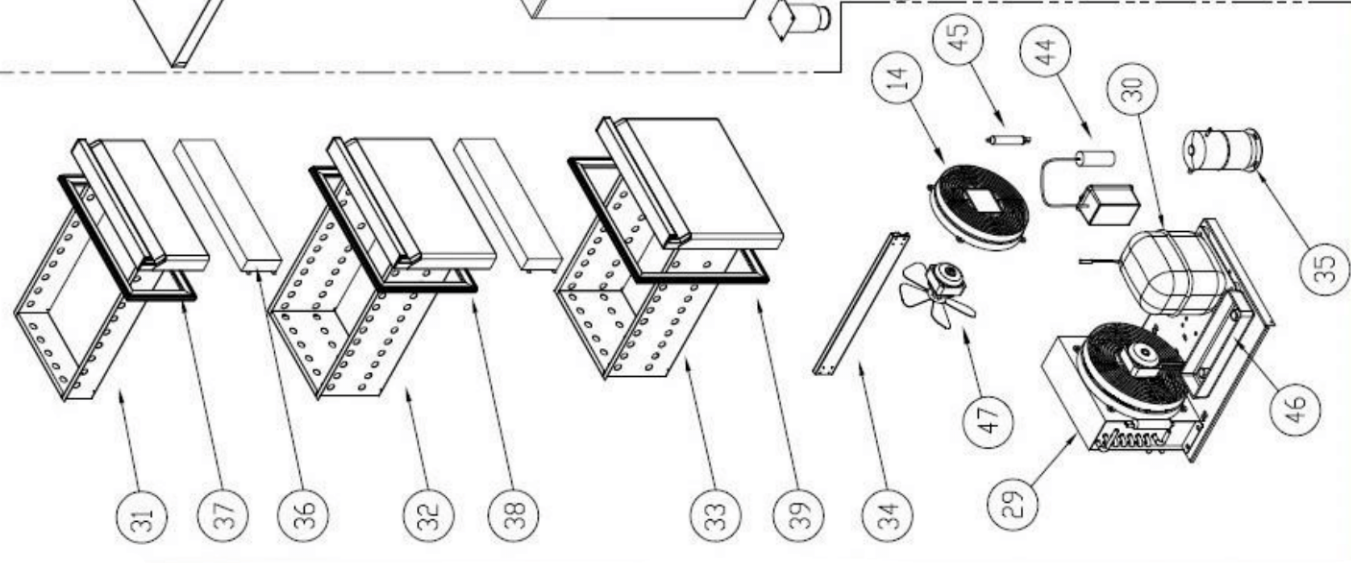
2 Years After arriving
the end user point. Warranty Certicate and User Manuel
With the Unit.

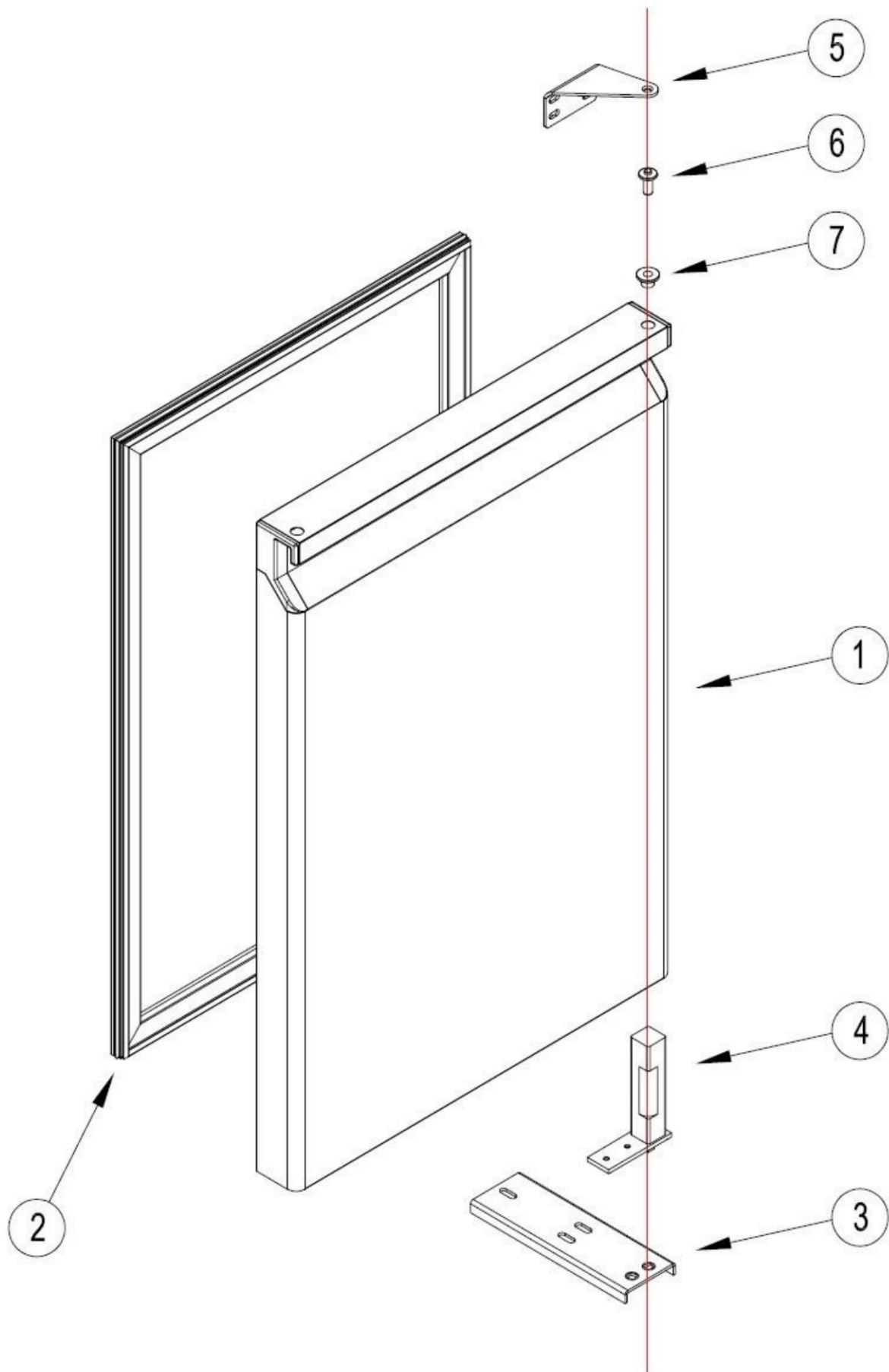


OPTIONS

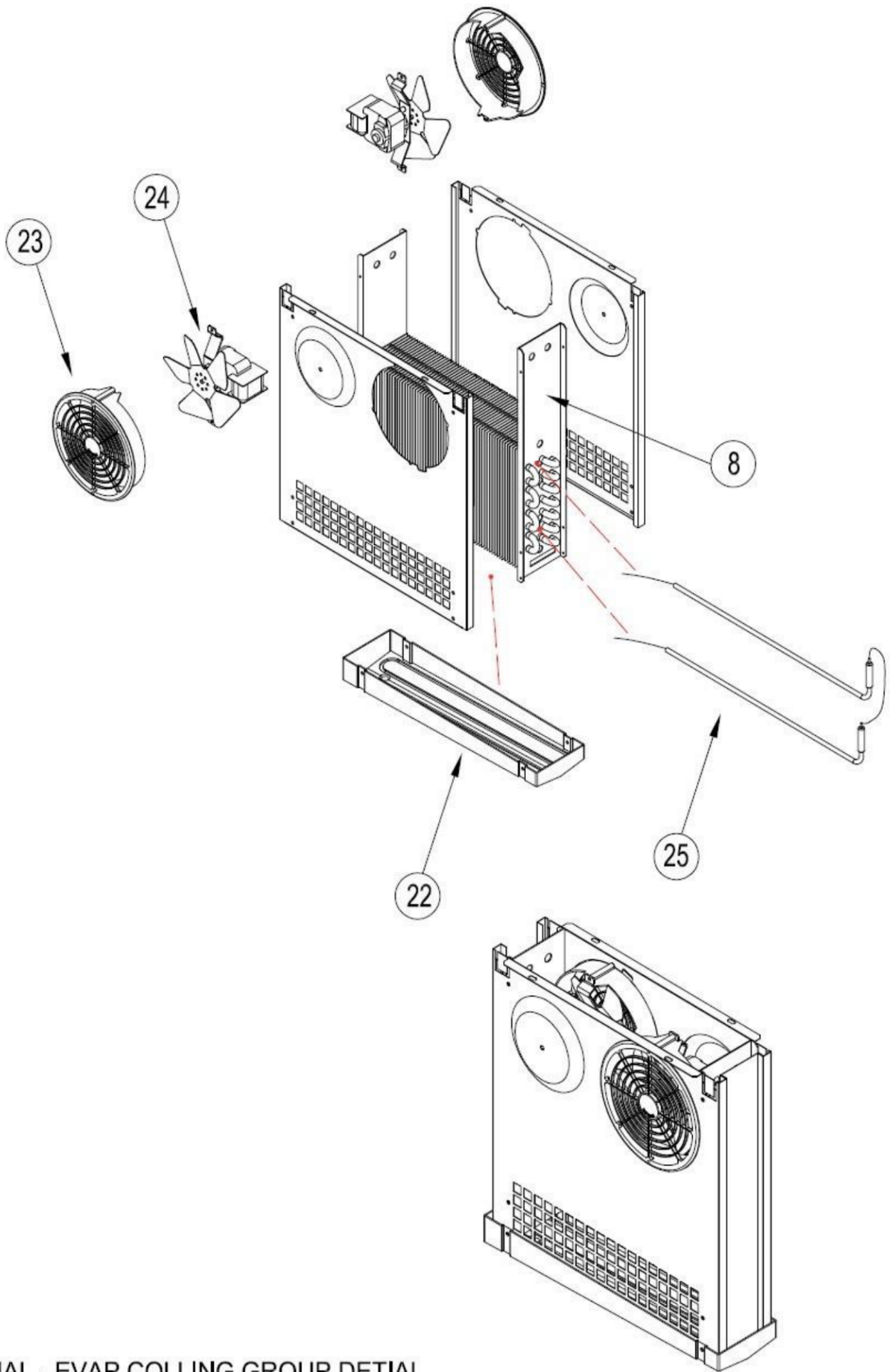


OPTIONS





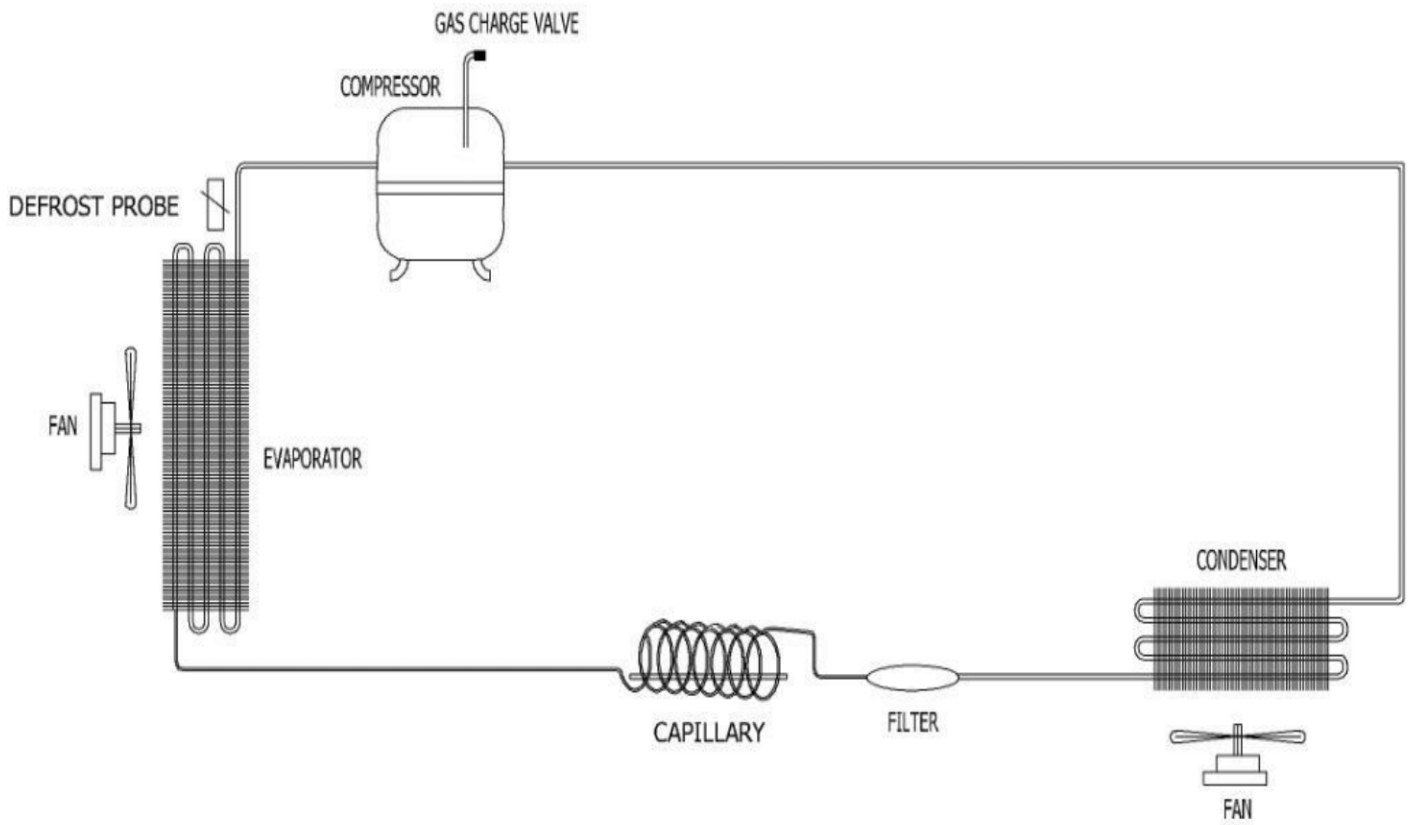
COUNTER TYPE REFRIGERATORS - DOOR DETIAL



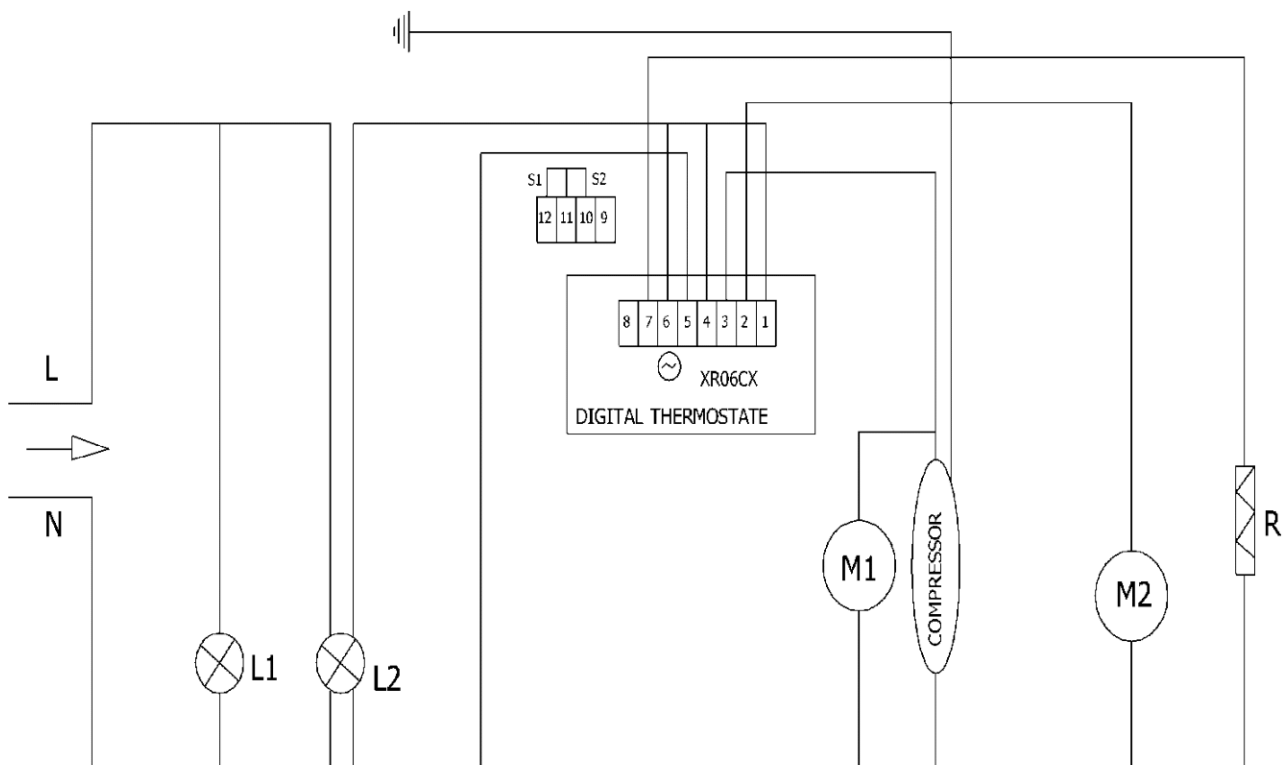
NORMAL - EVAP COLLING GROUP DETIAL

SPARE PART LIST

NO	MATERIAL NAME	ADET QTY
1	DOOR	4
2	DOOR GASKET	4
3	LOVER HINGE BRACET	4
4	UPRIGHT HINGE AND PARTS	4
5	UPPER HINGE	4
6	UPPER HINGE PIM	4
7	HINGE PLASTIC	4
8	EVAPOROTOR	2
9	CANOPY	1
10	STAINLESS STEEL LEG	5
11	SHELF-CGN	4
12	SHELF RACKET - SIDE	4
13	SHELF GUIDE - CGN	8
14	CONDANSER FAN PLASTIC	1
15	PLUG CABLE	1
16	EXPANSION VALUE	1
17	PROP	1
18	PROP	1
19	DIGITAL THERMOSTAT TWO PROPE(DIXELL)	1
20	DIGITAL LABEL	1
21	ON - OFF SWITCH	1
22	EVAPOROTOR CUP	2
23	PLASTIC FAN PROTECTION	4
24	EVAP FAN MOTOR	4
25	200W RESISTANCE	1
26	PROP COVER	1
27	WHEELS	3
28	WHEELS BRAKE	2
29	1/2 Hp CONDANSER	1
30	COMPRESSOR-EMT 6170 Z (1/4hp)	1
31	1/3 DRAWERS	
32	1/2 DRAWERS	
33	2/3 DRAWERS	
34	DRAWER RAIL	
35	LIQUID TANK	1
36	DRAWERS MIDDLE BRIDGE	
37	1/3 DRAWER GASKET	
38	1/2 DRAWER GASKET	
39	2/3 DRAWER GASKET	
40	WATER PROOF DIJITAL	1
41	EXPANSION VALUE ORIFICE	1
42	SHELF RACKET - BACK	4
43	SHELF RACKET - MIDDLE	4
44	ROLE BOX	1
45	DRAYER	1
46	WATER BOX	1
47	10W-FAN MOTOR	1
	COUNTER REF EVAP. DOUBLE	1



HORIZONTAL REFRIGERATORS NORMAL ELECTRICAL SCHEMA



- | | | | |
|------|---------------------|------|----------------------|
| | DIGITAL THERMOTER | L1 : | POWER LAMB |
| M1 : | CONDENSER FAN MOTOR | L2 : | ON OFF LIGHT |
| M2 : | EVAP FAN MOTOR | R : | EVAPORATE REZISTANCE |
| S1 : | ROOM PROB | | |
| S2 : | EVAPORATE PROB | | |